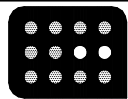
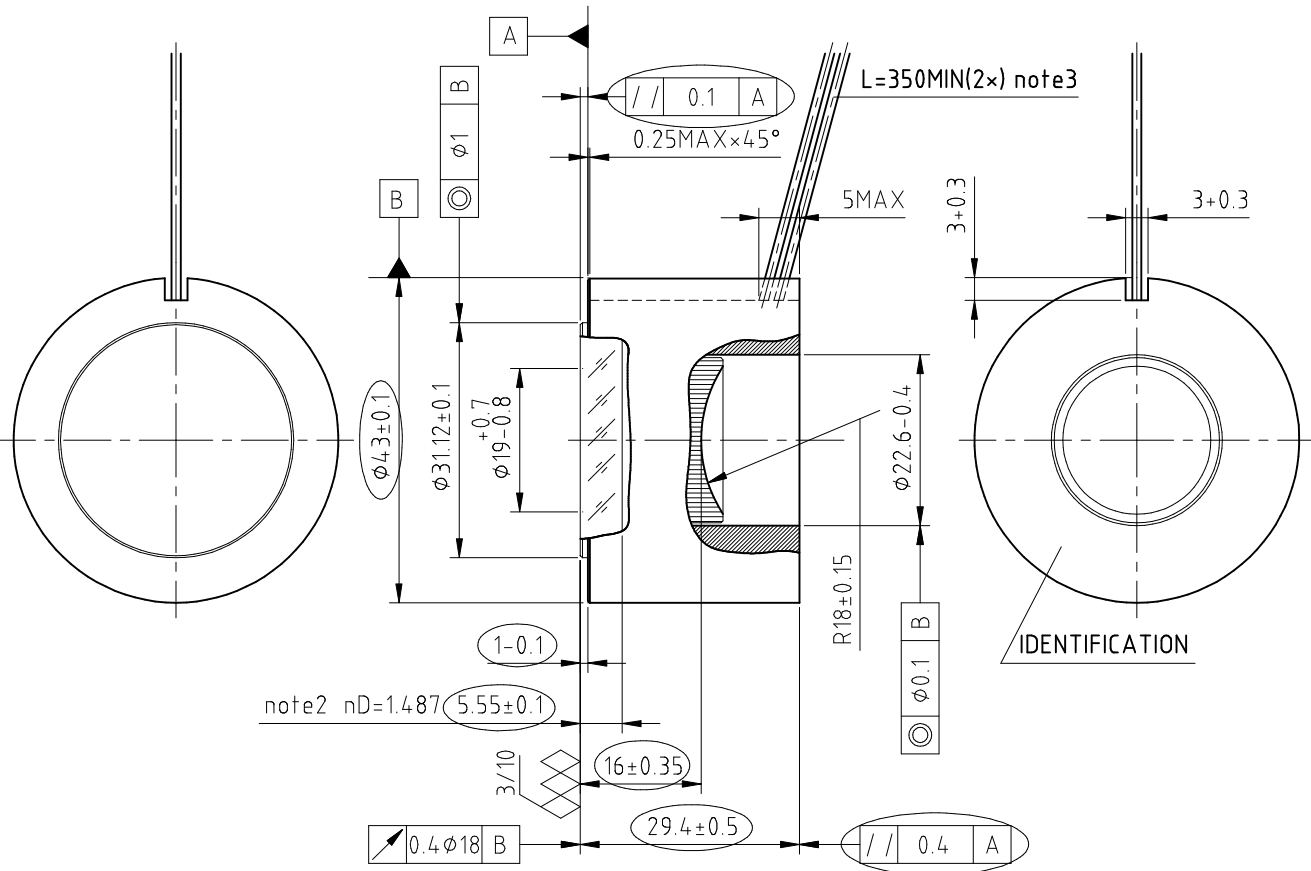


| | | | | | |
|----|----------------------|-----------------------------|--|-----|-----------|
| | new | cancelled | | new | cancelled |
| A1 | ?? | | | | |
| A2 | $\phi 31.12 \pm 0.1$ | $\phi 31.1 \pm 0.1$; note5 | | | |
| | | | | | |
| | | | | | |

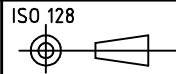
NOTE 1: REFERENCE CIRCLE \square IS THE CYLINDER WITH THE SMALLEST DIAMETER THAT FITS AROUND THE PLASTIC HOUSING.

- 2: RED WIRE = +2,7V DC - WIRE 28AWG TEFLON INSULATED
- BLACK WIRE = -(GROUND) - WIRE 28AWG TEFLON INSULATED
- 3: CRITICAL DIMENSIONS \bigcirc
- 4: INSPECTED BY GAUGE (DEP DRAWING 624-3369)

| |
|----|
| VK |
| |
| |
| |
| |
| |
| |
| |
| |
| |
| |



PHOTONIS-DEP
 ISO 9001 Certified



ISO 128
 glass
 ISO 10110
 A4

screw thread
 ISO 965

geometr. tolerances
 ISO 1101

finish
 ISO 1302

dimensions:
 mm

material:

scale:
 1:1

drawn: JK

| | |
|----|----------|
| A0 | 5-3-92 |
| A1 | 1-2-93 |
| A2 | 18-10-97 |

sheet:
 1 of 1

IMAGE INTENSIFIER XX1450, XX1451, XX1950, XX2050

183-0044A2 TV